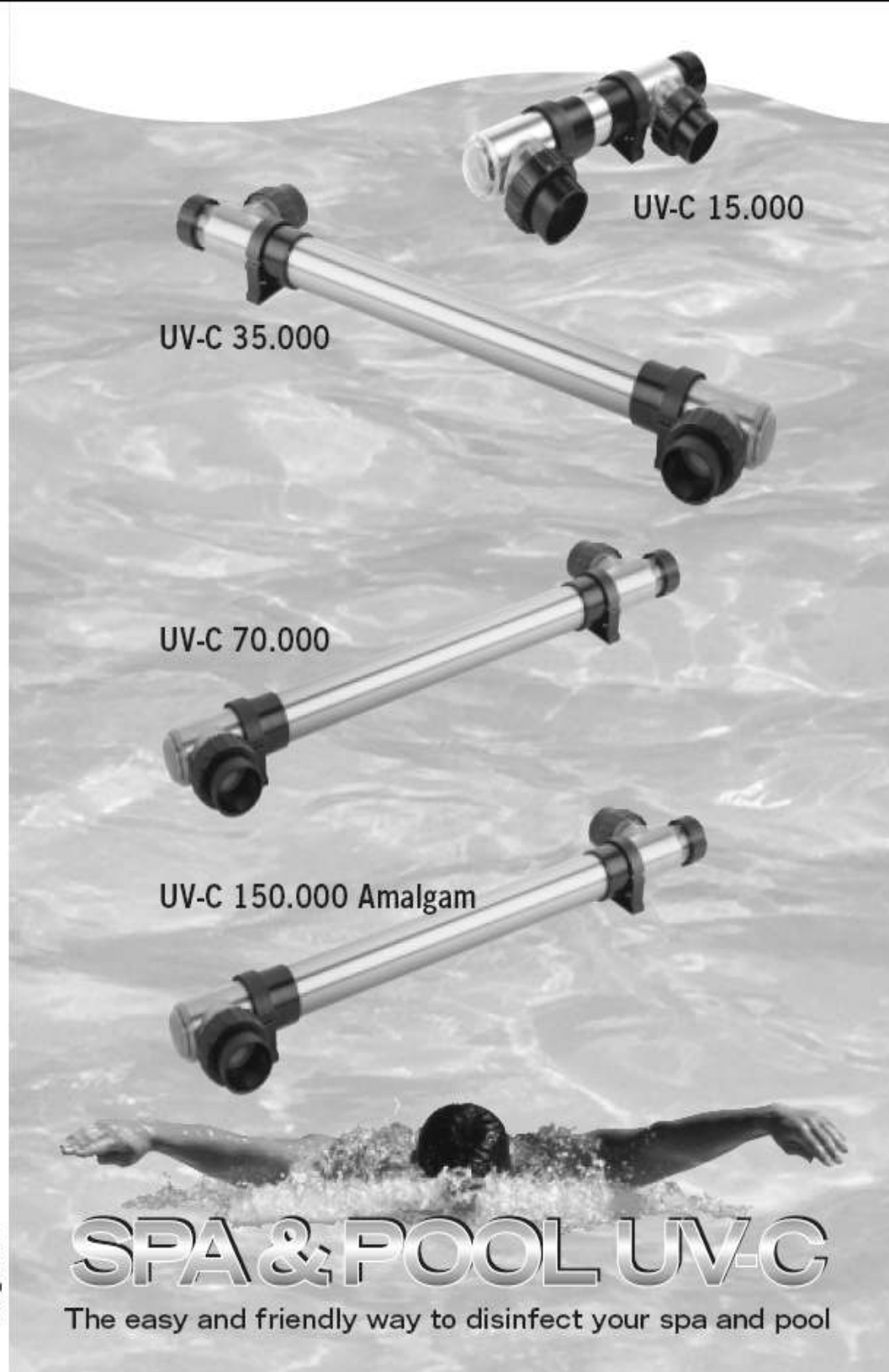


**CE**  
Made in the  
Netherlands

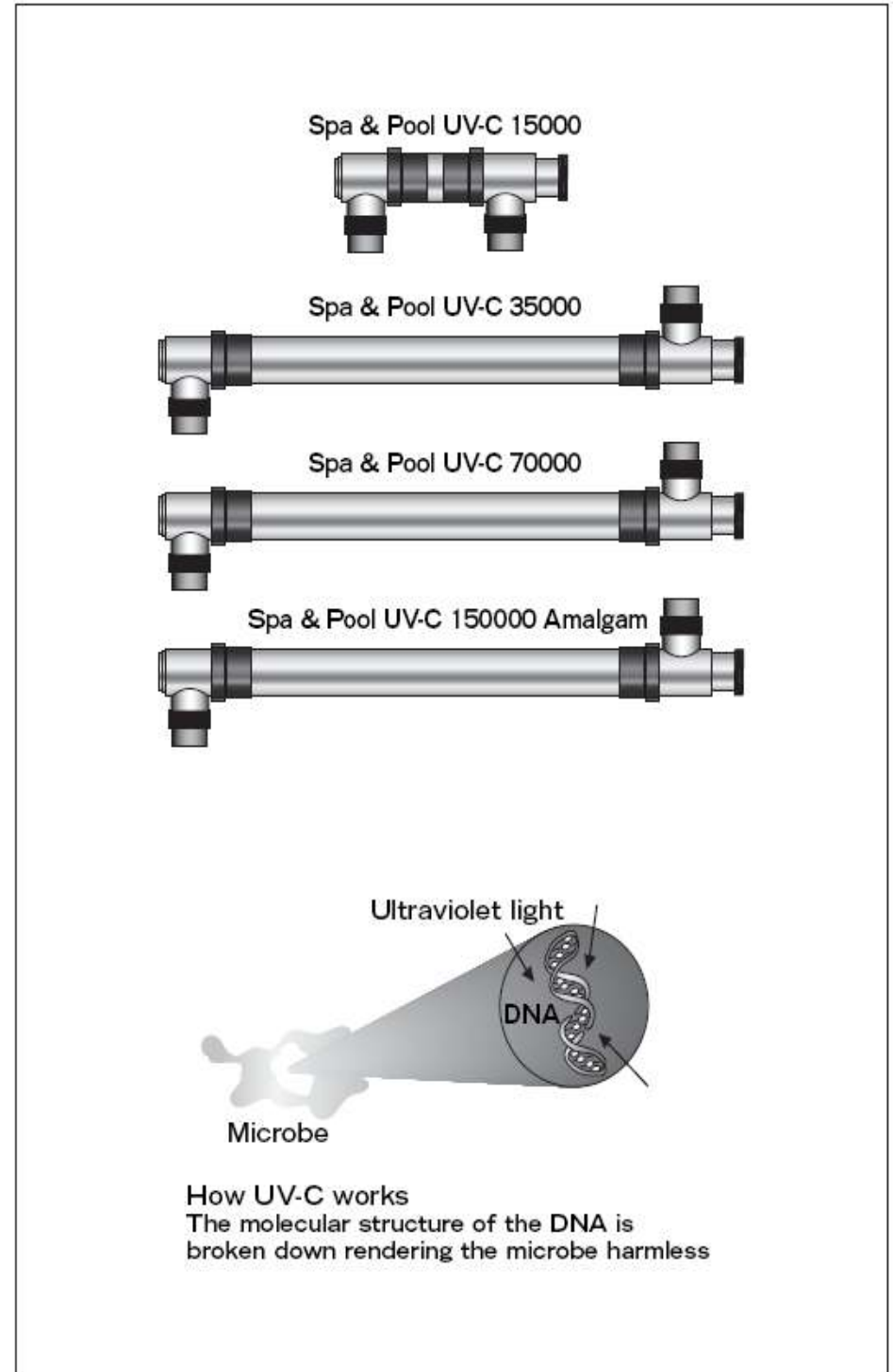
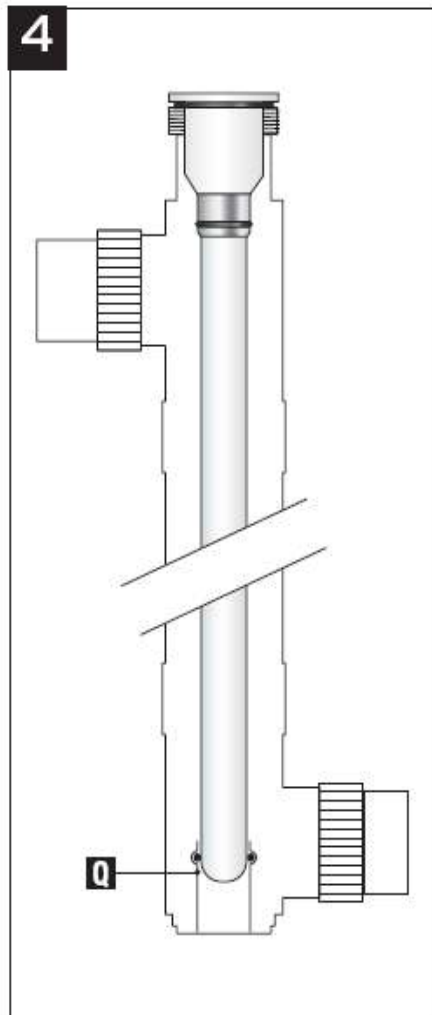
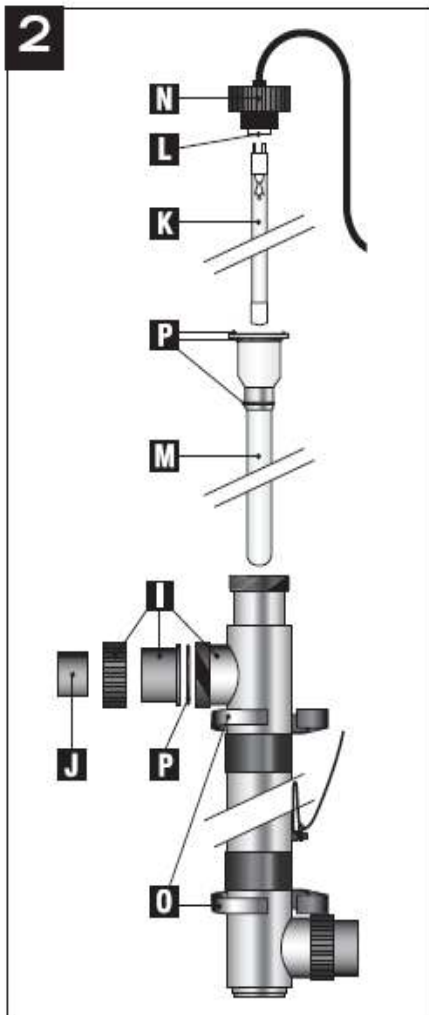
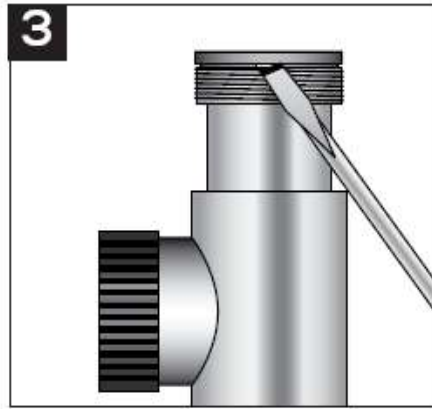
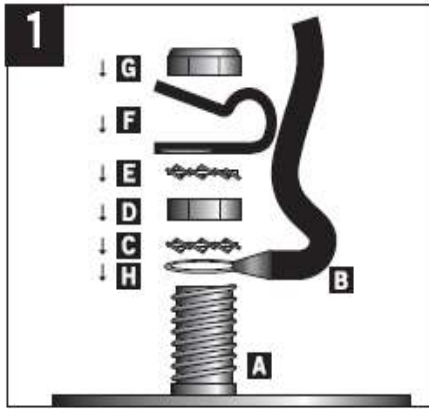


0703\_E801900



# SPA & POOL UV-C

The easy and friendly way to disinfect your spa and pool



Before installing this device, please read the instructions very carefully.

#### Action

The UV-C lamps generate UV-C radiation at a wavelength of 253.7 nm, which has a bactericidal action.

The Spa & Pool UV-C provides clean, fresh and clear water in an efficient and environmentally friendly manner. The water is fed through the UV-C unit by a pump. Here the water is exposed to UV-C radiation at a wavelength of 253.7 nanometres, produced by a special lamp. This radiation neutralises bacteria, viruses and other primitive organisms and prevents them from reproducing. Due to the length of the unit, the water is exposed to this high dose of radiation for a particularly long period. In addition, the stainless-steel interior reflects UV-C radiation, thereby increasing the efficiency by up to 35%. The stainless steel interior is electrolytically polished, making it difficult for dirt to stick on and keeping reflection at a maximum. With the Spa & Pool UV-C your water will be efficiently and safely disinfected, providing you with excellent water quality.

#### Advantages of UV-C treatment:

- Provides fresh, clean and clear water
- Efficiently and safely disinfects water
- Protects your bath against pathogenic organisms
- Keeps the formation of mould, bacteria and algae under control
- Can reduce the use of chlorine and other chemicals by 80%
- Prevents chlorine smell and irritation of skin and eyes (red eyes)
- Better for the environment than traditional methods

#### Characteristics of the Spa & Pool UV-C:

- Up to 35% more efficiency because of reflection
- Electrolytically polished stainless-steel reflective interior, making it difficult for dirt to stick on
- UV-C lamp/Life span: 9,000 hours
- Easy installation, servicing and cleaning
- Universal PVC fittings
- 2 years guarantee against faults due to workmanship
- The Spa & Pool UV-C device is earthed

#### Safety

This device produces dangerous radiation. Direct contact can be dangerous to the eyes and the skin. Therefore, always check the operation of the UV-C lamp only via the transparent attachments on the unit.

- Do not use the device if any parts are damaged (the quartz glass in particular).
- Switch off if there is no water passing through the device.
- The electricity safety regulations must be applied if the device is to be permanently attached to the electrical mains. If in doubts about the installation please contact a professional electrician or your electricity supply company.
- Remove the device during the winter months, when there is a danger of frost.
- The cable of this device is not replaceable. In the event of damage to the cable the whole device must be destroyed.
- The lamp will remain warm for about 10 minutes after the device is switched off.

#### Earthing installation (Drawing 1)

- 1 The cable (B) must be pulled through the strain relief (F) before installing the strain relief (F) onto the bolt (A). You do this by positioning the strain relief (F) at about 10cm from the end of the earthing cable (B).
- 2 Position the end ring (H) of the cable (B) over the bolt (A) which comes out of the housing.
- 3 Then position a serrated washer (C), hexagonal nut (D) and then another serrated washer (E) on the end ring (H).
- 4 Fasten the strain relief (F) on top so that a loop of  $\varnothing$  5cm is created.
- 5 Finally, position the locking nut (G) on the bolt (A).
- 6 If the various screws have been positioned in the correct sequence on the earthing bolt (A) then this can be tightened with an open-ended spanner or a ring spanner number 8. Make sure that it is not over-tightened because this can break the strain relief.

(The transparent nut which is screwed onto the bolt (A) by delivery, has no longer a function and can be discarded).

#### Installation (Drawing 2)

This device must never be put in the water. Always install outside the bath. Make sure there is always water flowing through the unit when the lamp is on.

- 1 Fit the unit with the three-piece couplings (I) in the circuit, if required using the reducing rings (J) supplied with the set.
- 2 Fit the unit with the pipe clips (O) (supplied with the set) at a permanent installation point and tighten the three-piece coupling (I). Make sure there is enough room left (+/- 1 mtr.) to remove the lamp (K)/quartz glass (M) for replacement and/or maintenance.
- 3 Fit the lamp (K) in the white lamp holder (L); then slide the lamp (K) carefully into the quartz glass (M) and tighten the screw cap (N) finger-tight on the unit.
- 4 Start the pump and check the flow of the system and that it is not leaking. Then check the seals (P) for correct positioning both at the connections and the quartz glass (see drawing 2).
- 5 Plug the power lead of the UV-C device into an earthed electrical socket with an earth leakage switch. Check that the lamp lights up; this can be seen through the transparent attachments on the device.
- 6 The device is switched off by removing the plug from the electrical socket.
- 7 Make sure that there is approximately 1 meter clearance in front of the UV-C device for subsequent disassembly operations.

#### Dismantling/Maintenance

During maintenance/dismantling always disconnect electrical current. The device needs to be cleaned twice a year. If algae or lime scale forms on the quartz glass tube (M) containing the lamp, it must be cleaned. The special lamp must be replaced after 9,000 hours. Clean the stainless steel interior with a soft brush.

- 1 Unscrew the three-part couplings (I) and allow the water to flow out of the device.
- 2 Twist the cap (N) containing the lamp off the device and replace the special lamp (K) if needed. Please handle with care as these are very delicate parts.
- 3 Carefully remove the quartz glass (M) with a large flat screwdriver (see drawing 3). Never force it!
- 4 Clean the quartz glass with an appropriate solution. Always use a soft cloth to clean the glass to prevent scratches.
- 5 When replacing the quartz glass in the housing make sure that it is placed on the seals (P) correctly and carefully slide the end of the quartz glass into the receiving guide (Q) (see drawing 4).

If the housing or the electrical section must be replaced then the earthing should first be disconnected from the housing. When assembling a new housing or electrical section then please read Installation and Dismantling first. Make sure that you keep the various bits of the earthing properly. These are not supplied with a new housing or electrical section. If there is any doubt about the connection, consult a certified electrician.

#### Technical specifications

	UV-C 15.000	UV-C 35.000	UV-C 70.000	UV-C 150.000 Amalgam
Lamp TUV 4P-SE T5	16 Watt	40 Watt	75 Watt	130 Watt
UV-C (W)	3,9 Watt	15 Watt	25 Watt	50 Watt
UV-C (%) after 9,000 hours	75%	85%	80%	80%
Bath content (L.)	15.000L	35.000 L	70.000 L	150.000 L
Max. flow through	7.200 l/h	15.000 l/h	20.000 l/h	40.000 l/h
Max. pressure	3 bar	3 bar	3 bar	3 bar